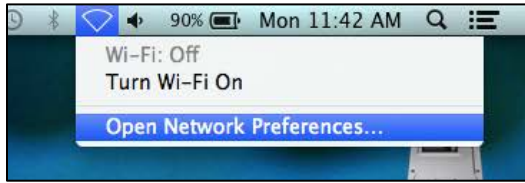
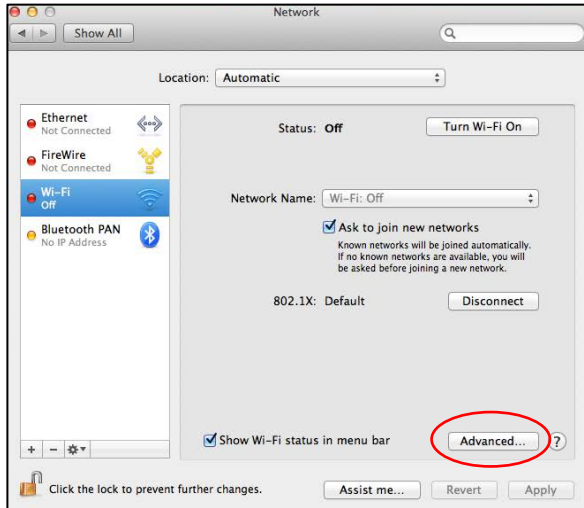


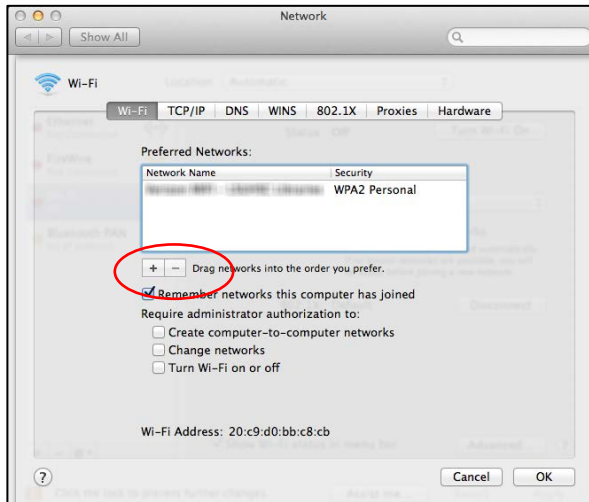
Connecting a Mac (10.7 – 12 Monterey) to the LSUHSC-Secure wireless network



- From the desktop, click the WiFi network icon and select **Open Network Preferences**



- Turn the **Wi-Fi connection off**
- Click **Advanced...**



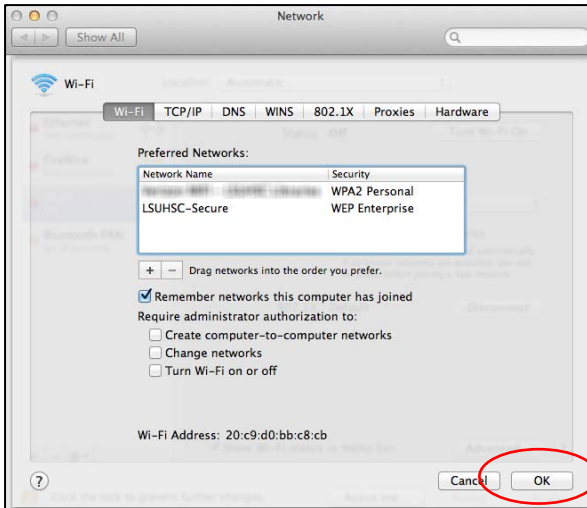
- If you have previously configured an LSUHSC network (LSUHSC-Secure, LSUHSC-Visitor, or eduroam), use the minus sign beneath the list of Preferred Networks to delete it
- Click on the + (plus) sign to add a new network



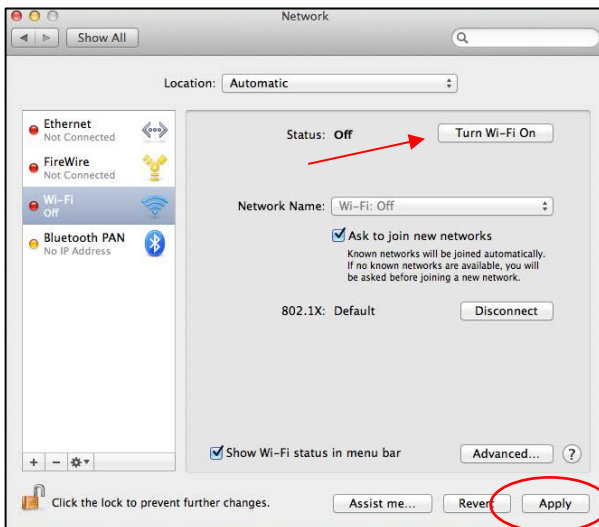
- Enter the Network Name **LSUHSC-Secure**
- The Security can be either **WPA2 Enterprise** or **WEP Enterprise**



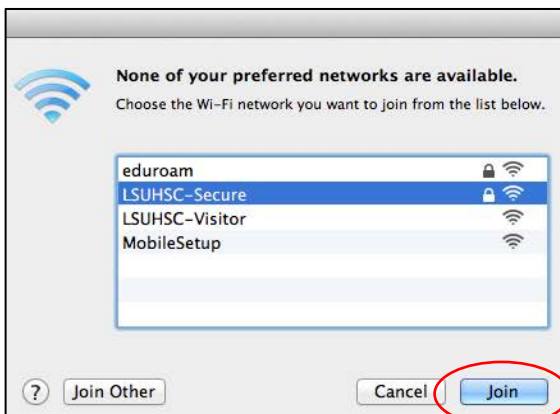
- Enter your LSUHSC user i.d. as the Username and your network password when prompted
- Click **OK**



- LSUHSC-Secure will be added to the list of Preferred Networks
- Click **OK**



- Click **Apply**
- Click **Turn Wi-Fi On**



- Choose LSUHSC-Secure from the list and click **Join** if you see this message that none of your preferred networks are available